

2024-2025



**SURVIVOR'S  
HOPE**  
CRISIS  
CENTRE

# Impact Report



10-24 Aberdeen Ave, Box 925  
Pinawa, MB  
RoE 1Lo



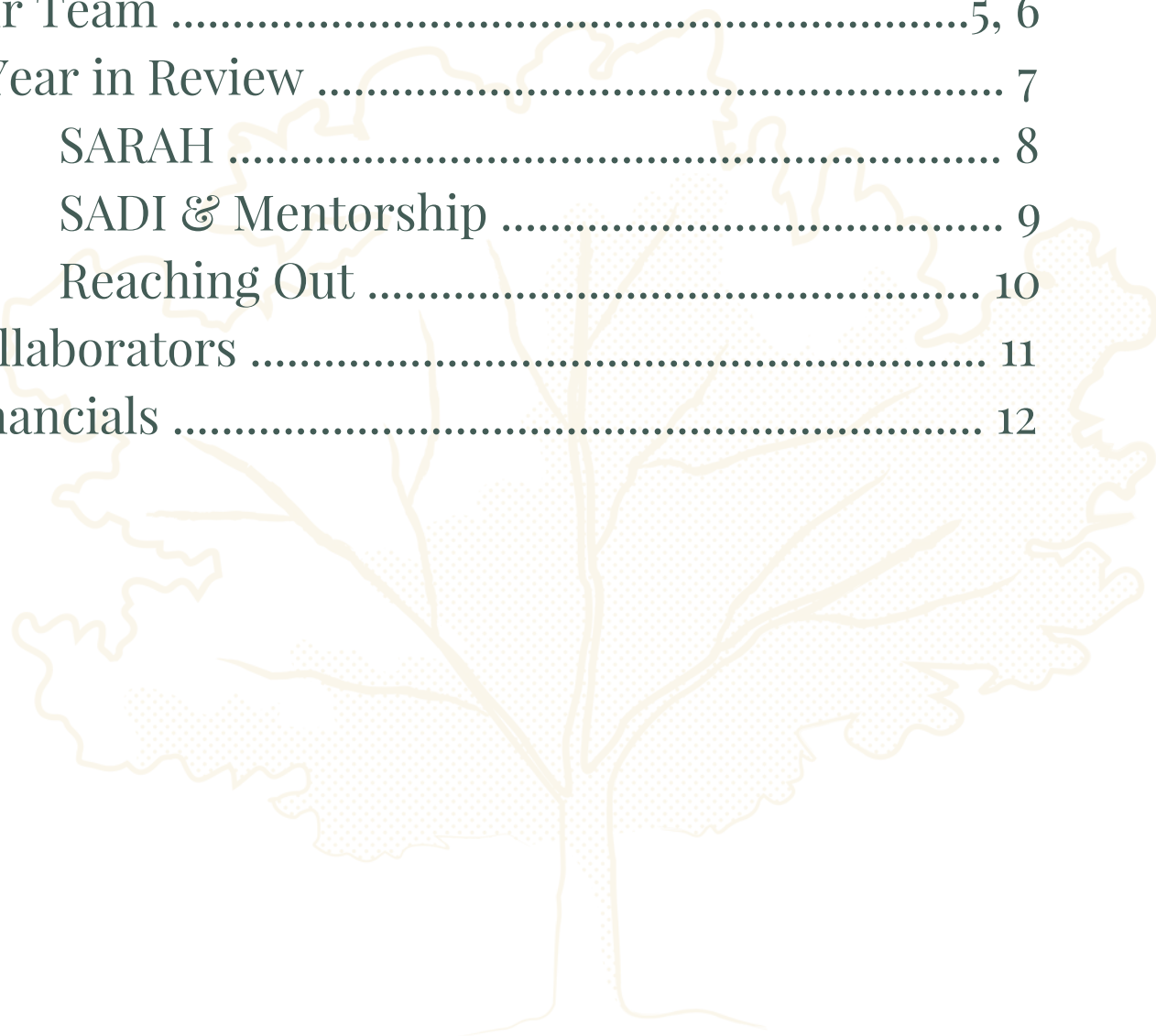
Phone: 204-753-5353  
Fax: 204-753-2015 (Attn: SARAH)



[survivors-hope.ca](http://survivors-hope.ca)  
[@survivors.hope.mb](mailto:@survivors.hope.mb)

# Table of Contents

Mission .....	2
Board of Directors &	
Message from the Board Chair.....	3
Message from the Executive Director .....	4
Our Team .....	5, 6
A Year in Review .....	7
SARAH .....	8
SADI & Mentorship .....	9
Reaching Out .....	10
Collaborators .....	11
Financials .....	12



# Mission

## Partnering with communities to offer hope and healing through support and education

Survivor's Hope Crisis Centre Inc. (SHCC) provides support and services to individuals residing in the Interlake-Eastern region of Manitoba who have experienced acts of sexual violence, as well as to secondary victims of sexual violence. We recognize that acts of sexual violence are motivated by power inequalities, therefore our work also addresses social and systemic root causes of gender-based violence to create greater change to public ideology, policies, politics, and procedures.



Survivor's Hope Crisis Centre is honoured to work on Treaty 1,3 and 5 and the homeland of the Métis Nation. We acknowledge the relationships that were formed in these territories through Treaty and Ceremony was intended to be one of respect, reciprocity, and renewal.

We acknowledge the Anishinaabe, Cree, Oji-Cree, Dakota, Dene and Métis nations who are the original stewards of the lands we have the honour of working on.

In our work, Survivor's Hope Crisis Centre centers the historical and contemporary harms experienced by First Nations, Inuit, and Métis people of Canada. We acknowledge the harms and mistakes of the past, and we dedicate ourselves to moving forward in partnership with Indigenous communities in a spirit of reconciliation and collaboration.



# Board of Directors

Chair – Samantha Roberts  
Vice Chair – Sandra Tower-Pace  
Treasurer – Heather Courchene  
Secretary – Savannah Hyra  
Members at Large –  
Cass Ilchena  
Paula Jones  
Asta Carvalho  
Julie Remillard  
Chelsea Mcleod  
Executive Director (Member at Large) –  
Gillian Schofield

3

## Message from the Board Chair

I have had the privilege of serving as Chair of the Board, the past two years, witnessing the organization's remarkable growth and evolution. This year has been no exception, marked by significant developments that strengthen our mission to support survivors of sexualized violence and providing critical workshops in schools to help build and promote healthy relationships.

One of the highlights this year was the successful launch of Project SMOKE (Sexual Misconduct Outreach, Knowledge & Empowerment). This initiative specifically supports individuals affiliated with the Canadian Armed Forces across Manitoba who have been impacted by sexualized violence, offering targeted outreach and empowerment resources.

We are also proud to have regained funding for SARAH Counselling through Federal Justice. This achievement followed a vigorous media campaign and sustained advocacy efforts to ensure this essential service remains available in our region. In support of this, we have expanded our team by hiring a multi-lingual SARAH counsellor who provides services in Ukrainian, Russian, Polish, and English, broadening our accessibility to diverse communities. Furthermore, to increase access to counselling services across the Interlake-Eastern region, we have secured additional spaces to hold ongoing sessions in Eriksdale, Ashern, Beausejour, Pinawa, Scanterbury, Gimli, and Selkirk. This expansion reflects our commitment to meeting survivors where they are, ensuring timely and localized support.

This vital work would not be possible without the unwavering dedication of our Board members, who generously volunteer their time to provide governance, oversight, and strategic direction in partnership with our Executive Director, Gillian Schofield. Their commitment ensures that Survivors Hope remains focused and effective in fulfilling its mission. We also extend our deepest gratitude to the SARAH volunteers, whose selfless support during evenings, weekends, and holidays is indispensable. Their compassion and availability enable us to offer continuous support and advocacy to those in need. Additionally, the staff at Survivors Hope demonstrate exceptional dedication and passion in all aspects of their work. Whether working evenings to facilitate the SARAH Circle or representing the organization at community events on weekends, their commitment is the foundation of our success. I sincerely thank every member of our team and volunteer network for their invaluable contributions to the vital work we do.

**Samantha Roberts,**  
**Board of Directors Chairperson**





# Message from the Executive Director

This past year has been a remarkable one for Survivor's Hope Crisis Centre. The dedication and perseverance shown by our entire team when faced with challenges has been truly inspiring. Their unwavering commitment in the face of adversity speaks volumes about the heart and strength behind our work.

At the core of every program, project, and event are survivors. Through trauma-informed, person-centered approaches, we continue to uplift and empower individuals, amplify the voices of youth, and demonstrate that meaningful change is not only possible, it's happening. When you lead with compassion and care, transformation follows.

Our relationships continue to grow, we've been welcomed into new schools and communities, and have built meaningful collaborations with resource centres, reflecting the wraparound support and sense of safety we strive to offer.

The gratitude I feel for being part of this work is difficult to fully express. It is an honour to stand beside such incredible human beings, our staff, crisis volunteers, and board members, each one united by a shared vision of hope and healing.

To our funders, stakeholders, supporters, and the communities we serve, thank you. Your belief in this work makes everything we do possible.

Together, we are changing lives.



**Gillian Schofield, Executive Director**



# Our Team

## **Sexual Assault Recovery and Healing (SARAH) Program**

The SARAH program provides long-term counselling to survivors of sexual violence who are 13 and older and/or to those who care about them. Not pictured are our ten dedicated SARAH workers, who volunteer their time to provide crisis support to individuals of all genders who are seeking services following an experience of sexual violence.

## **Sexual Assault Discussion Initiative (SADI) Program**

SADI is an education and prevention program whose facilitators provide workshops to grade 6 - 12 students on healthy relationships, self-esteem, internet safety, and exploitation.

## **Reaching Out**

The Reaching Out program bridges gaps between communities by providing resources, facilitating presentations, and attending events to build knowledge and connect individuals to our services.

## **Finance & Office Administration**

The Finance & Office Administration Clerk supports the Executive Director and Treasurer, maintaining financial health of the organization, including invoicing, budgeting, and compiling financial reports.







LP Penner (they/them)

SARAH Counsellor  
& Coordinator



Nina Chufarova (she/her)

SARAH Counsellor



Kris Lobay (ze/hir)

SADI Youth Program  
Coordinator & SARAH  
Counsellor



Chantal Shibata (she/they)

Reaching Out & Admin  
Coordinator



Natasha Van Dorp (she/her)

SARAH Crisis Coordinator  
& SADI Facilitator



Becky Reis (she//her)

Finance Clerk

### SARAH Volunteers

Amanda Grabish  
Kris Lobay  
Linda Desrosiers  
Chantal Shibata  
Sherri Dyck  
Leslie Joyce  
Tracy Bonney  
Erica Young  
Rachel Cluett  
Portia Topnik  
Chrissy Epps  
Ty Meyers  
Samantha Roberts  
Sheeza Haroon  
Amber Dreger  
Shelly Guevarra  
Hayley Rockwell  
Charity Vagi  
Renee Partyka  
Paula Egesz  
Enika Zirk

### We Said Farewell to

Brycie Klassen  
Meaghan Bullen  
Jaimie Kozyra  
Robyn Sugden  
Bowen Yang  
Debbie Murdock  
Melanie Wood  
Janessa McLean



# A Year in Review





# SARAH

## Crisis & Counselling

*"Offering hope and validation to those affected by sexual violence"*

This year, the SARAH program expanded its reach to provide both immediate crisis intervention and ongoing support for survivors of sexualized violence. With the addition of SARAH Counsellor Nina Chufarova and five new volunteers, the crisis team enhanced its capacity to offer acute care, individual counselling, and healing groups.

New initiatives included Sarah Circle, a monthly open group designed to support anyone impacted by sexualized violence, and Project SMOKE (Sexual Misconduct Outreach Knowledge and Empowerment), which provides specialized support to individuals aged 16 and older in Manitoba who are affiliated with the Canadian Armed Forces.

The SARAH Crisis program also continued our collaboration with the Winnipeg Folk Festival by providing 24/7 wellness support throughout the duration of the festival.



21 Individuals on our team of SARAH Volunteers, following two iterations of training

435 Individual counselling sessions held

7 Drop-in counselling sessions were held

48 Crisis calls were responded to

5 Lunch and Learn webinars were conducted & facilitated

2 SARAH Circle support groups held

63 Sexual assault files reviewed for the RCMP Sexual Assault Investigation Review Committee

792 SARAH Brochures distributed in community

500 SARAH Posters distributed in community

70 SARAH Crisis Posters distributed to Primary Care Centres and RCMP detachments throughout the region

# SADI & Mentorship

*"Preparing youth for strong, healthy and respectful relationships"*

The SADI Program continued to build meaningful connections with youth across both long-standing and newly engaged regional schools and communities. This year, we saw a significant increase in referrals and workshop requests—an honour that speaks to the growing trust in our program. In response, we adapted our workshops to meet the unique needs of each group. These consistent and caring relationships have helped students feel supported and safe, empowering them to share their experiences with SADI facilitators as trusted members of their broader community.

The Mentorship Program also saw continued growth, welcoming two new schools for the second year in a row. A highlight of the year was the hosting of two Queer Straight Alliance (QSA) events, one in the winter organized by our team, and another in the spring led by Powerview-Pine Falls students and staff. The spring gathering was a powerful milestone, reflecting the strength of youth leadership and the growing sustainability of QSA groups, supported by educators, community members and most importantly, the youth themselves.



Survivor's Hope Crisis Team at the Canadian Museum for Human Rights supporting the first ever Annual Amplifying Joy QSA Conference 2024.

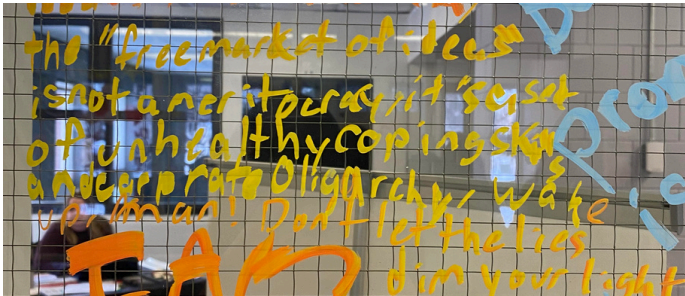
109 SADI workshops delivered

1293 Students attended a SADI workshop presentation

9 Communities partnered for SADI workshops

180 Youth participated in Mentorship groups

110 Students & Faculty participated in the Spring Regional Conference





# Reaching Out

*“Engaging communities, empowering individuals and equipping a safer world for all”*

The Reaching Out program played a key role in expanding the agency’s presence and increasing public awareness of Survivor’s Hope and the sexual violence support services available across the region. This year, we focused on building visibility through active participation in community events and festivals, both locally and in Winnipeg including Stonewall Quarry Days, Beausejour Rodeo & Community Garage Sale Day, Truth and Reconciliation Day, as well as various fairs, volunteer expos, social justice events, community events and wellness days.

A major milestone was hosting our 1st Annual Take Back the Night event—a public walk advocating for safety and the right to move through our communities freely, at any time of day. It was a powerful and unifying experience, bringing people together in solidarity against sexual violence.



- Developed and delivered workshops on Compassionate Responding to Sexualized Violence, Workplace Sexual Harassment and expanded our Digital Consent workshops to highlight the emerging harms of AI.
- Successful integrations with the Western side of the Interlake region, building new relationships with social service and mental health agencies, RCMP, and hospitals
- Created new SARAH brochures, SARAH Volunteer brochures, SADI brochures, SARAH posters, and updated the Regional Resource Guide
- Continued participation in committees and groups, including three Manitoba Harm Reduction Networks, Ending Sexual Violence Canada’s Sexual Violence Working Group, Sexual Assault Advisory Committee and the Rural Manitoba Sexual Assault Response Network

**51** Community events attended

**1500** Regional Resource Guides printed

**1927** Social media followers

**618** E-mail newsletter subscribers

# Collaborators

Family Violence Consortium of Manitoba

Manitoba Harm Reduction Network - Powerview-Pine Falls, Eriksdale/Ashern, Selkirk

Manitoba Association of Women's Shelters (MAWS)

Rural Manitoba Sexual Assault Response Network

RCMP Sexual Assault Investigation Advisory Committee

Ending Sexual Violence Canada - National Working Group Against Sexualized Violence

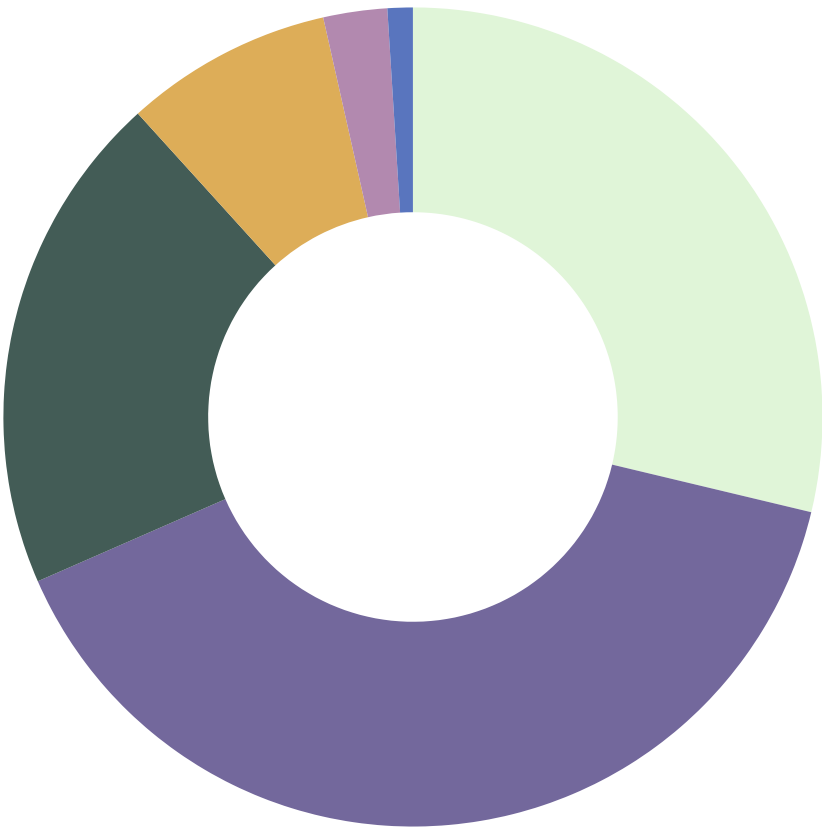
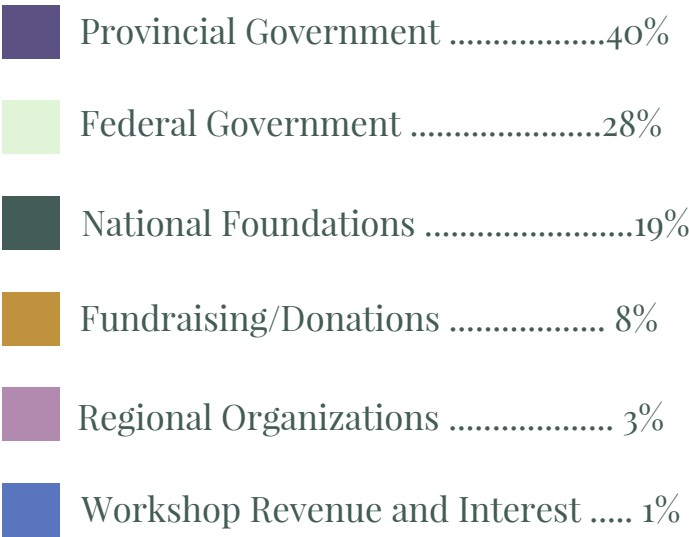
Sexual Assault Advisory Committee

North East Regional Stop Sexual Exploitation Team (NERSSE)

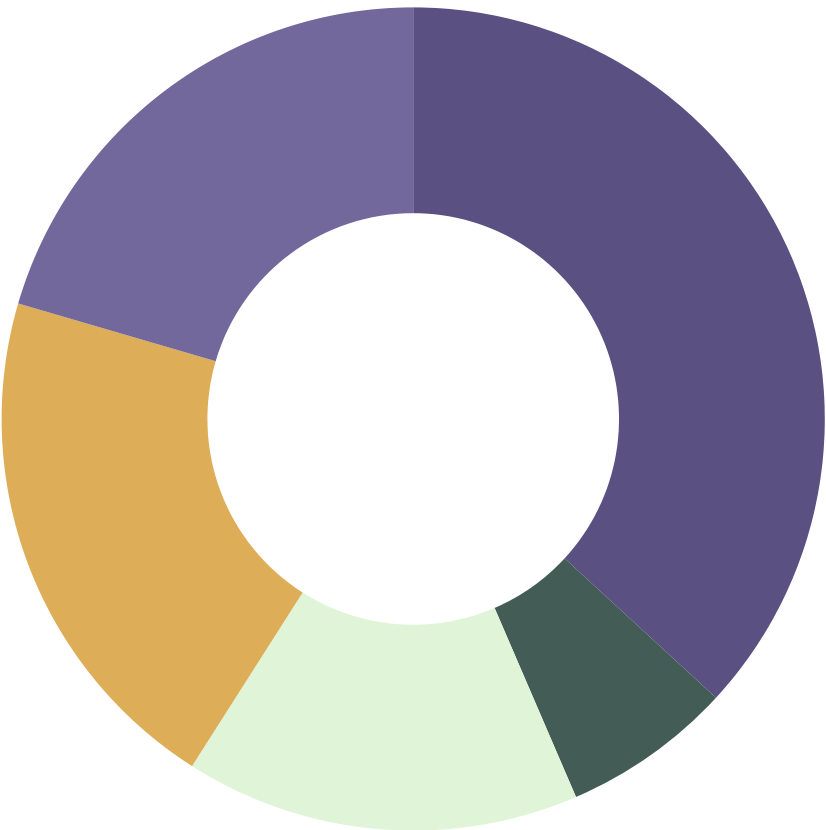


# Financials

## Revenues



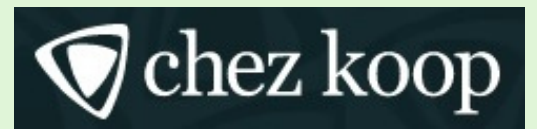
## Expenses





# Thank You

*To all of our funders and private donors, without whom this work would truly not be possible*



Canada 



Women and Gender  
Equality Canada

Femmes et Égalité  
des genres Canada